



Laney Graduate School Overview 2014

EMORY
LANEY
GRADUATE
SCHOOL





EMORY

LANEY
GRADUATE
SCHOOL

LANEY GRADUATE SCHOOL

- ✓ Located in Atlanta, GA
- ✓ We currently welcome more than 2,000 scholars and students from more than 120 countries.
- ✓ 86% of our students are pursuing PhD degrees
- ✓ The Laney Graduate School students work with faculty in a number of areas and schools including the School of Medicine, Emory College, Rollins School of Public Health, Nell Hodgson Woodruff School of Nursing, and Goizueta Business School.
- ✓ Graduates of Emory: Our alumni live in more than 150 countries.



EMORY

LANEY
GRADUATE
SCHOOL

LANEY GRADUATE SCHOOL

Degree Programs

Humanities

- Art History-PhD
- Comparative Literature-PhD
- Developmental Practice-MDP
- English-PhD
- Film Studies-MA
- French-PhD
- Institute for Liberal Arts-PhD
- Islamic Civilization Studies-PhD
- Music-MM/MSM
- Philosophy-PhD
- Spanish-PhD

Social Sciences

- Anthropology-PhD
- Business-PhD
- History-PhD
- Psychology-PhD
 - Clinical
 - Cognition and Development
 - Neuroscience and Animal Science
- Political Science-PhD
- Sociology-PhD
- Women's Gender and Sexual Studies-PhD



EMORY
LANEY
GRADUATE
SCHOOL

LANEY GRADUATE SCHOOL

Degree Programs

Behavioral Sciences and Health

Biochemistry-PhD

Bioethics-MA

Biomedical Engineering-PhD

Biostatistics-PhD

Cancer Biology-PhD

Chemistry-PhD

Clinical Research-MSCR

Cognition and Development-PhD

Computer Science & Informatics-MS, PhD

Education-PhD

Epidemiology-PhD

Health Services Research and Policy-PhD

Environmental Sciences-MS

Genetics & Molecular Biology-PhD

Immunology & Molecular-PhD

Mathematics-MS, PhD

MD/PhD-MD/PhD

Microbiology and Molecular Genetics-PhD

Molecular* Systems Pharmacology-PhD

Neuroscience-PhD

Nursing-PhD

Nutrition and Health Sciences-PhD

Physics-PhD

Population Biology, Ecology, & Evolution-PhD



EMORY

LANEY
GRADUATE
SCHOOL

LANEY GRADUATE SCHOOL

Special Programs

- ✓ IMSD-Initiative to Maximize Student Development <http://imsd.emory.edu/index.html>
- ✓ BEST-Broadening Experiences in Scientific Teaching
- ✓ Mellon Foundation Graduate Teaching Fellowship
- ✓ ORDER-On Recent Discoveries by Emory Researchers
- ✓ New Thinkers/New Leaders



EMORY

LANEY
GRADUATE
SCHOOL

LANEY GRADUATE SCHOOL

Special Programs

Professional Development Programming

- ✓ TATTO-Teaching Assistant Training and Teaching Opportunity
- ✓ Jones Program in Ethics
- ✓ Pathways Beyond the Professoriate
- ✓ Alumni-Mentoring Program
- ✓ 3MT
- ✓ Grant Writing Program
- ✓ Professional Development Funds



EMORY

LANEY
GRADUATE
SCHOOL

LANEY GRADUATE SCHOOL

Admission Overview

Graduate School Deadlines

Laney Graduate School early priority Deadline is **Oct 31**

Different for each program but you want to stay around ***Dec 1*** deadline so that you have full file review

Applicants **MUST** check deadlines for academic programs online

- Almost always earlier than the Graduate School Deadline
- Application will not be reviewed if after department deadline event if before graduate school deadline
- No refund for application will be submitted after department deadlines



EMORY

LANEY
GRADUATE
SCHOOL

LANEY GRADUATE SCHOOL

Application Process

1. Transcripts
2. Standardized Test Scores-GRE for Master's & PhD
Our institution code is 5187 (no department code is needed)
3. Statement of Purpose
4. Resume/CV
5. Letters of Recommendations
6. Application Fee Our is \$75
*****Early Application Fee Waiver deadline is Oct 31**



EMORY

LANEY
GRADUATE
SCHOOL

LANEY GRADUATE SCHOOL

Supporting Documents

Transcripts

- Upload unofficial transcripts to website
- Once accepted, official transcripts are required and need to be sent to LGS

Standardized Test Scores- GRE

Our institution code is 5187 (no department code is needed).

- Vary by program-see specific website for the program
- Must come directly from the testing agency to the Graduate School
- If taken prior to application deadline, report scores so departments can make decisions early but official will be required.



LANEY GRADUATE SCHOOL

Supporting Documents

Statement of Purpose

- Overview of why you want to be in the program
- Less about personal and speak to the rigor of interest in a particular discipline shown through research
- Look at each program to see specific talking points

Resume/CV

- Overview of your accomplishment or experience
- Research experience should detail your role
- Publications should only be listed if you are included

Letters of Recommendation

- Set up time with faculty to discuss graduate school pursuits and include resume or CV
- Check with recommenders before submitting applications to make them aware of deadlines
- Letters should be from research faculty that you work with and faculty that have taught you



EMORY

LANEY
GRADUATE
SCHOOL

LANEY GRADUATE SCHOOL

Funding Opportunities

- **Fellowships**
- **Scholarships**
- **Graduate Assistantships**
- **Unsubsidized Student Loans**

[http://www.gs.emory.edu/
financial_support/scholarships/
index.html](http://www.gs.emory.edu/financial_support/scholarships/index.html)



LANEY GRADUATE SCHOOL

Funding Opportunities

George W. Woodruff Fellowship

The George W. Woodruff Fellowship is awarded to students who have demonstrated outstanding academic achievements and who show excellent promise as future leaders in their fields. Up to fifteen fellowships are awarded each year, to entering students in any programs of doctoral study. The fellowship covers all tuition and fees and provides a \$5,000 supplement to the standard program stipend for up to five years.

Emory Graduate Diversity Fellowship

The Emory Graduate Diversity Fellowship (EGDF) is awarded to applicants who have demonstrated outstanding academic achievement and who will contribute to the development of a richly diverse student body. To be considered for the EGDF, applicants must be U.S. citizens or permanent residents who plan to pursue a program of doctoral study. The fellowship covers all tuition and fees for five years and provides a \$5,000 supplement to the standard program stipend for up to five years.

Laney Graduate School Fellowship

The Laney Graduate School Fellowship is awarded to entering doctoral students in all fields. The fellowship covers tuition up to five years and provides a \$2,500 supplement to the base stipend.



EMORY

LANEY
GRADUATE
SCHOOL

LANEY GRADUATE SCHOOL

Acceptance Decisions

Two Fold Process

Programs

- Academic program committee reviews the files and makes admissions decision. They can give a verbal offer if accepted.
- Program submits recommendation to accept or refuse applicant to the Graduate School

Graduate School

- Applicant receives the official acceptance letter from the Graduate School through email



EMORY

LANEY
GRADUATE
SCHOOL



Atlanta BEST Program

career exploration beyond the bench





EMORY

LANEY
GRADUATE
SCHOOL

BEST Programming



Self-Assessments

Individual Development Plan (IDP)

Assesses your interests, skills, and values to help you explore career paths in the biomedical fields

Birkman Assessment

Behavioral assessment that measures your motivational needs, occupational interests, and likely stresses.

Conflict Management Assessment

Learn about conflict management styles and identify your own. Learn how to leverage your strengths and work on your weaknesses

Strong Interest Inventory Assessment

Gain insight about your interests and related career to then help you decide on your career path

Speaker Series

Professionals with PhDs in the sciences who are currently in "alternate" careers will be invited to talk about their jobs, how they got there, skills sets, how to break into new career paths, etc.

Leadership Workshops

Building Your Network

Project Management I: Basic and Principles

Project Management II:

Lessons Learned in a Research Organization

Leadership and Team Building: Ropes Course

Communication in the Non-Academic Workplace

Creativity in Leadership

Negotiations

Business and Law Series

University Technology Transfer

Business of Innovation

Intellectual Property 101

Intellectual Property 102

Entrepreneurship Panel

Scientists Working in Industry Panel

Informational Interviews

Meet with professionals in the field, who are currently doing something similar to the job you want to pursue. Hear inside, one-on-one perspectives about your career choice.

Internship

Minimum of 6 weeks for 8 hours/week
Immersion experience to understand the day to day aspects projects related to the career path of your choice





EMORY

LANEY
GRADUATE
SCHOOL

Emory University STEM Research and Career Symposium

March 25-27, 2015
Emory Conference Center
Atlanta, GA



A premier research symposium for undergraduates and graduate students in the STEM disciplines and their mentors who are interested in

- Doctoral programs
- MD/PhD programs
- Post baccalaureate programs
- Post doctoral training

• Featuring opportunities to

- Present your research in a poster or oral session
- Discuss your research with Emory faculty, postdoctoral fellows and graduate students in both scientific and social settings
- Attend professional development workshops
- Hear inspirational speeches by prominent scientists

• Information

- E-mail: stem.symposia@emory.edu
- Website: gs.emory.edu/STEM

Laney Graduate School
Office of Postdoctoral Education
MD/PhD program
Center for Science Education



Full travel awards available!



2014
1st_Years



Briana Brown
IMSD Fellow
Georgia Tech



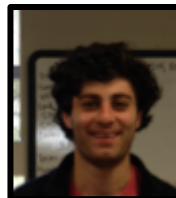
Alex Chen
Lehigh



Hyerim Kim
Seoul National
Fulbright



Allyson Koyen
Carnegie Mellon

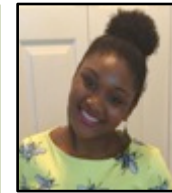


Fadi Pulous
Vanderbilt

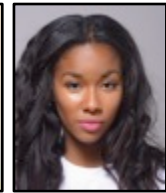


Emily Summerbell
Woodruff Scholar
Vanderbilt

2014
Masters Program

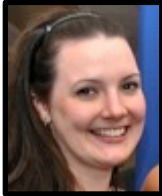


Nyasia Jones
Emory
(Grossniklaus)



Kari Tyler
Emory
(Van Meir)

2013
2nd_Years



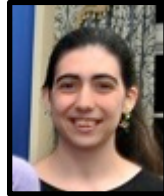
Rachel Commander
Wellborn Scholar
Emory
(Rita Nahta)



**Valentina
Gonzalez-Pecchi**
Fulbright
Universidad de
Concepcion
(Haian Fu)



Lauren Rusnak
UNC-Chapel Hill
(Haian Fu)



Cara Schiavon
Univ. of Florida
(Rick Kahn)



Yun Wei
Wuhan University
(Anna Kenney)



EMORY
LANEY
GRADUATE
SCHOOL

Cancer Biology
Graduate Program
Graduate Division of Biological
and Biomedical Sciences

2014-2015 Student Photo Directory

2012
3rd_Years



Katie Barnhart
Keuka College
(Larry Boise)



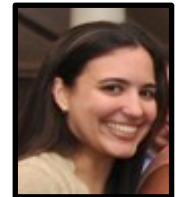
Jamie King
IMSD Fellow
NC-A&T
(Harold Saavedra)



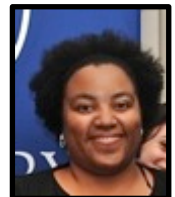
Josue Moran
USF
(Carlos Moreno)



Hope Robinson
Georgia State
(Erwin Van Meir)



Alessandra Salgueiro
EGDF Fellow
UNC-Chapel Hill
(Adam Marcus)



Christina Ward
Ellis Jones Scholar
Agnes Scott
(Lily Yang)

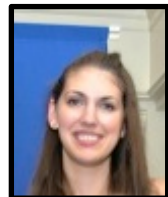
2011
4th_Years



Gina Alesi
Rice Scholar
Michigan
(Sumin Kang)



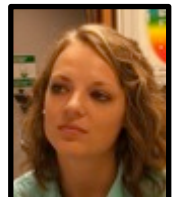
**Jason Conage-
Pough**
EGDF Fellow
MIT
(Larry Boise)



Kristin Limpose
Clemson
(Paul Doetsch)



**Jasmine Miller-
Kleinhenz**
Rice Scholar
UNC-Chapel Hill
(Lily Yang)



Jessica Konen
Transylvania Univ.
(Adam Marcus)



Makendra Umstead
NCCU
(Haian Fu)



Dave Weir
McGill
(Larry Boise)



Scott Wilkinson
Berry College
(Adam Marcus)



Elizabeth Zoeller
Rice Scholar
UNC-Chapel Hill
(Paula Vertino)



EMORY

LANEY
GRADUATE
SCHOOL

LANEY GRADUATE SCHOOL

WHY EMORY!!!!!!

- ✓ National Ranked Graduate Programs with highly esteem faculty and scholars
- ✓ \$500 million cutting edge research being conducted
- ✓ Funding Packages-more than 90% of students receive full support
- ✓ Diversity is welcomed and support. 2014 cohort represents 50 states and 120 countries, ages ranging from 20-52 years of age.
- ✓ Professional Development Programming
- ✓ Located in Atlanta, GA hub of industry, academia, government and CDC in our backyard!!!!!!